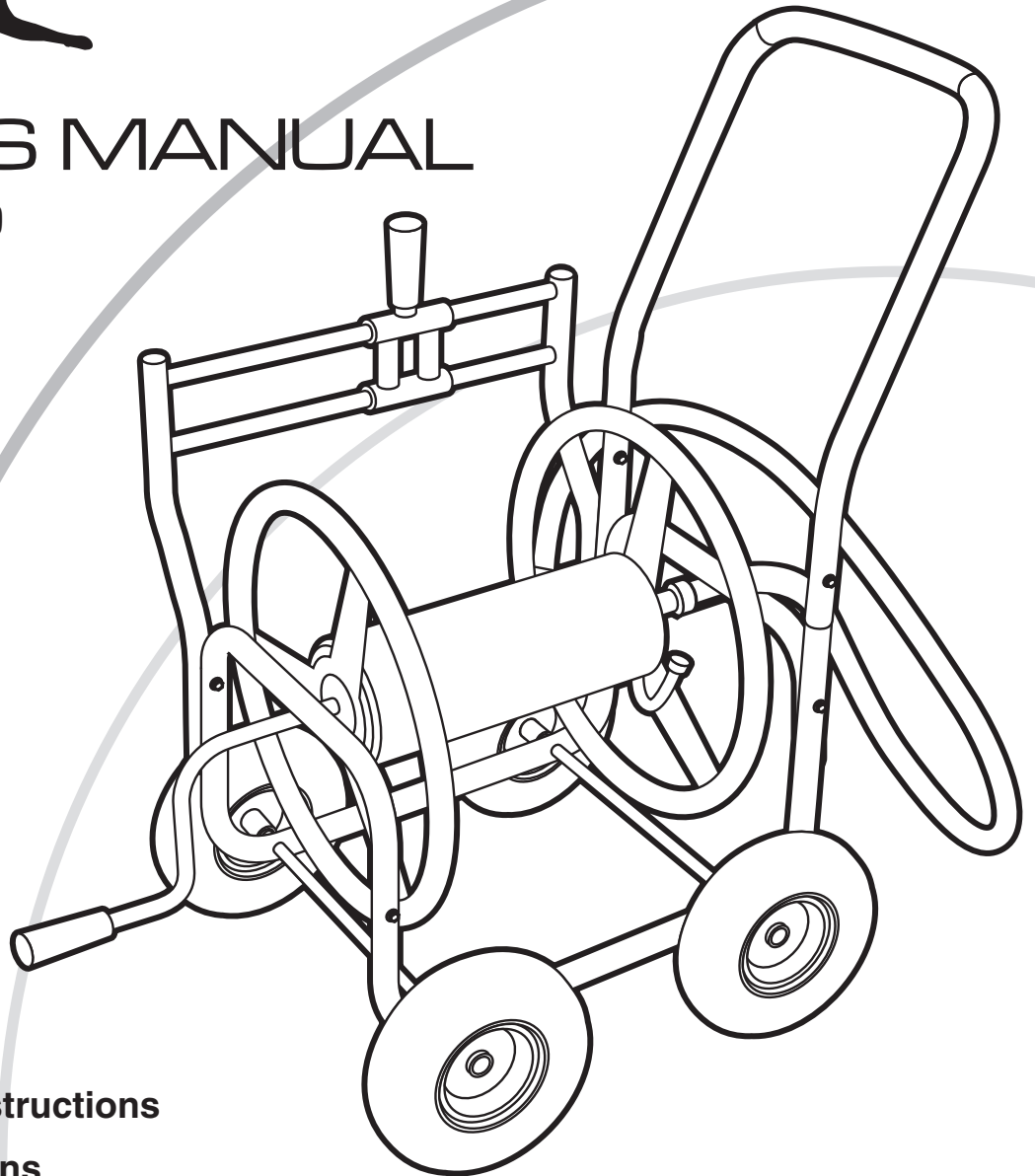




OWNER'S MANUAL

Model MH1330



- Important Safety Instructions
- Assembly Instructions
- Parts and Hardware Identification

Hose Reel Cart

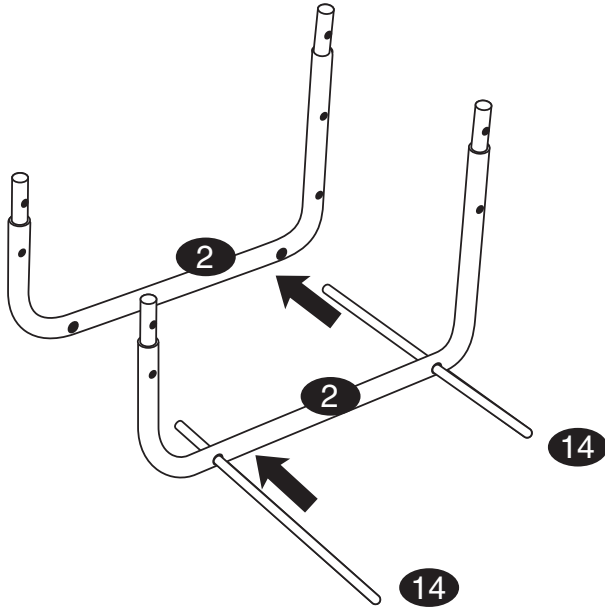
CAUTION:

Read, understand and follow ALL instructions before using this product

ASSEMBLY INSTRUCTIONS

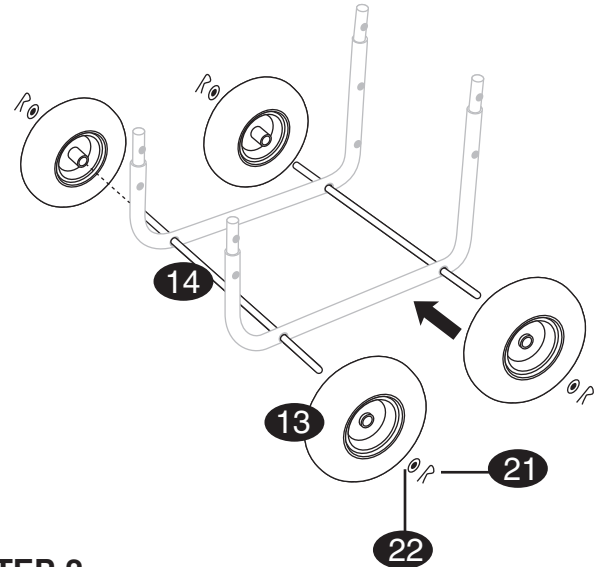
Your Hose reel cart requires assembly. Account for all parts and hardware before beginning assembly. If any parts are missing, damaged or if you have questions or need additional instructions **DO NOT RETURN THIS PRODUCT TO THE RETAILER**, call the manufacturer at **1-800-304-1316**.

TOOLS REQUIRED FOR ASSEMBLY: Flat Head Screwdriver, Adjustable Wrench and/or Pliers.



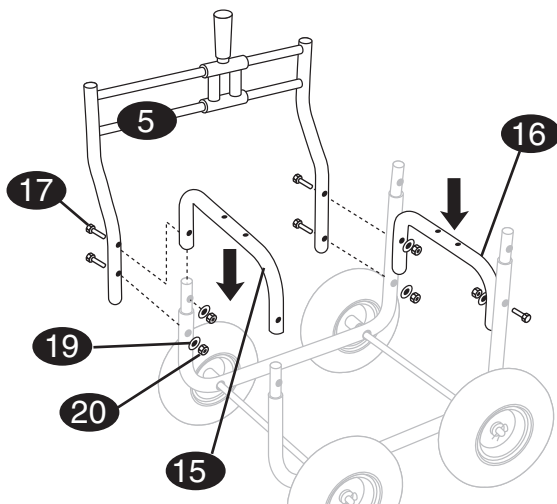
STEP 1

Insert axles (14) through the lower frame (2) of the unit.



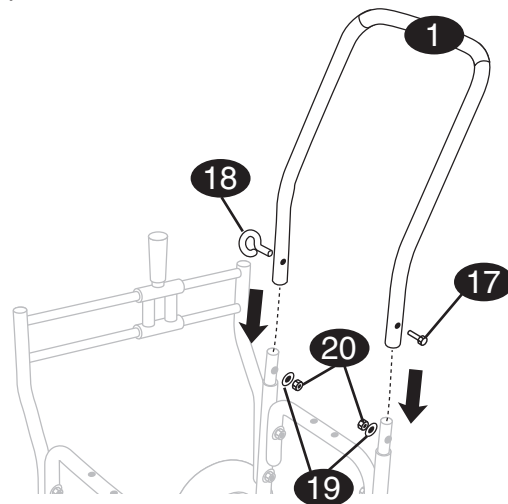
STEP 2

Slide wheels (13) with the wheel hub to the inside onto the axle ends (14). Secure wheels with large washers (22) and cotter pins (21).



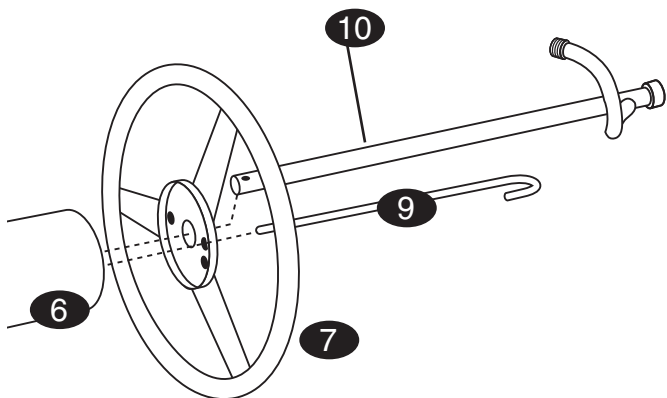
STEP 3

Slide front frame (15) over the tubes on the main frame. Do not insert bolts at this time. Install the hose guide assembly (5) to the side of the main frame. Install 2 bolts (17) in the bottom holes only. Insert the cross brace into the main frame and attach remaining bolts, washers (19) and nuts (20).



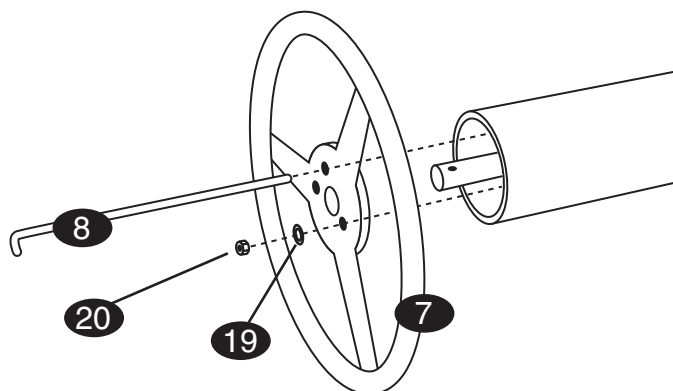
STEP 4

Slide the handle (1) onto the vertical posts located on the frame and align the holes. Secure the handle using bolt (17), eye bolt (18) 2 washers (19), and 2 nuts (20).



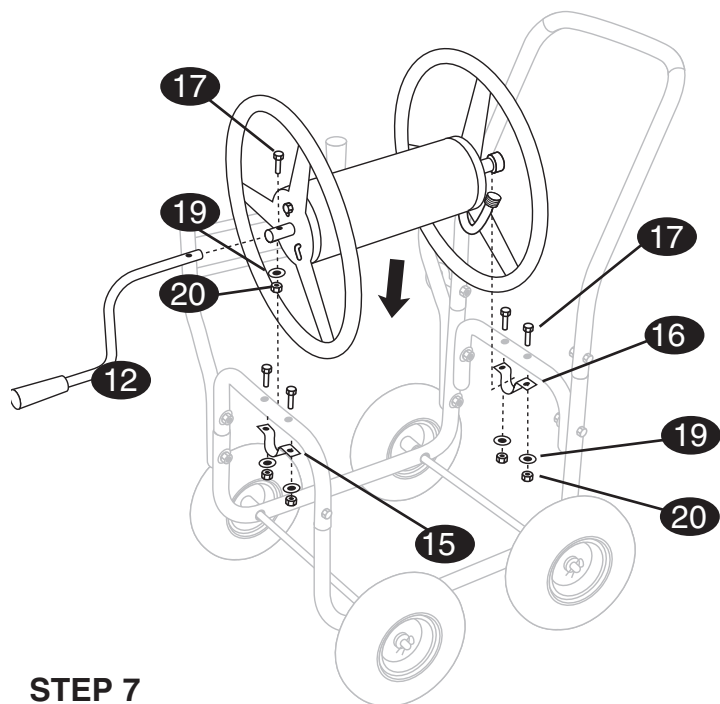
STEP 5

Before beginning assembly of the drum, make sure you line up the hose retainers as pictured in the above diagram in order for the "L" and "J" rods to line up to the appropriate holes. Line up one of the hose retainers (7) with the drum cylinder (6) and insert the drum cylinder into the collar portion of the hose retainer. While holding that in place, insert the drum axle (10) through the center of the hose retainer (7) as shown in the diagram (the curved section of the drum axle should be positioned between the two holes in the hose retainer). Insert the "J" rod (9) around the drum axle so that it holds the drum axle in place, and feed it through the hose retainer and drum cylinder as shown.



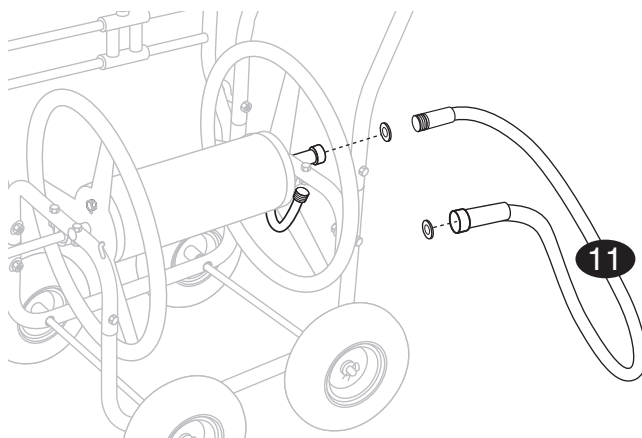
STEP 6

Assemble the other hose retainer (7) onto the other end of the drum cylinder at this time by lining up the holes as shown in the diagram. Insert a washer (19) and nut (20) onto the end of the "J" rod (9) in order to keep all of the assembled components in place. From the end of the drum cylinder where you just assembled the washer and nut, insert the "L" rod (8) through the hose retainer as shown in the diagram and slide the "L" rod all the way through the drum cylinder and out the single hole on the other end of the drum cylinder. Insert a washer (19) and nut (20) onto the end of the "L" rod and tighten both nuts from this step.



STEP 7

Install crank handle hub (15) onto the main frame with 2 bolts (17), 2 washers (19) and 2 nuts (20). Do not tighten completely. Line up the drum assembly inside the main frame. Insert the crank handle through the crank handle hub (12) so that it supports one end of the drum assembly. While holding this in place, attach the hose coupler hub (16) to the main frame on the other end of the drum assembly with 2 bolts (16), 2 washers (19) and 2 nuts (20). (do not tighten completely). Line up holes in the crank handle (12) and the drum assembly and insert bolt (17), washer (19) and nut (20). Tighten securely. Tighten the remaining nuts and bolts from this step.



STEP 8

Feed the flexible hose through the eye bolt (18) on the handle before making any hose connections. Insert 1 rubber washer (23) into the female swivel coupling on the reel assembly, then connect the male end of the leader hose. Insert 1 rubber washer (23) into the female end of the water supply tube. Attach garden hose to threaded water supply tube and wind onto reel.

PARTS AND HARDWARE IDENTIFICATION

- | | | |
|---------------------------|-------------------------|-----------------------|
| 1 Push Handle (1) | 9 "J" Rod (1) | 17 Bolts (12) |
| 2 Main Frame (2) | 10 Drum Axle (1) | 18 Eye Bolts (1) |
| 3 Cross Brace (1) | 11 Flexible Hose (1) | 19 Washers (13) |
| 4 Front Frame (1) | 12 Crank Handle (1) | 20 Nuts (13) |
| 5 Hose Guide Assembly (1) | 13 Wheels (4) | 21 Cotter Pins (4) |
| 6 Drum Cylinder (1) | 14 Axles (2) | 22 Wheel Washers (4) |
| 7 Hose Retainer (2) | 15 Crank Handle Hub (1) | 23 Rubber Washers (2) |
| 8 "L" Rod (1) | 16 Hose Coupler Hub (1) | |

EXPLODED DRAWING FOR ASSEMBLY

