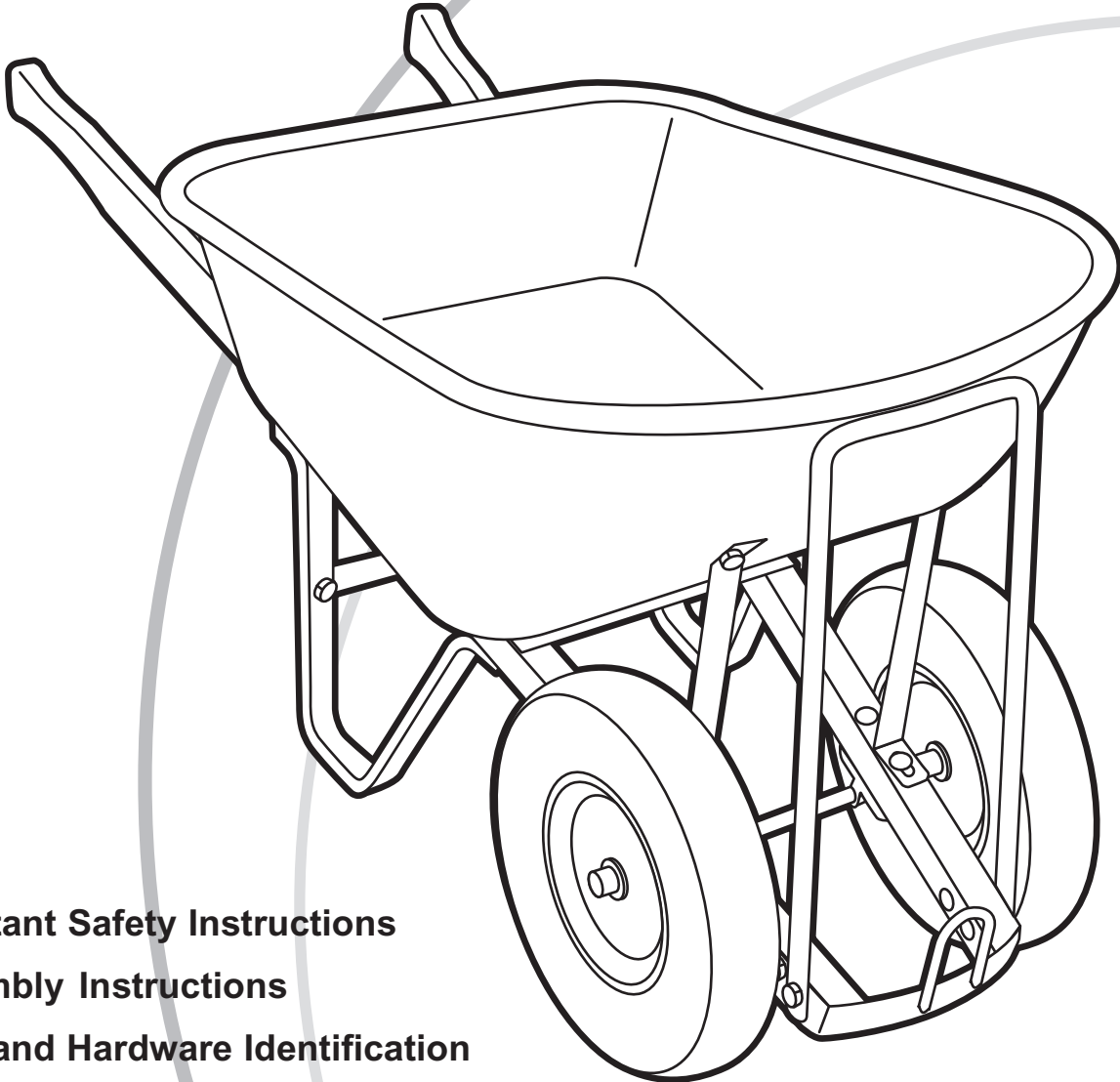




OWNER'S MANUAL

Model MH1650



- Important Safety Instructions
- Assembly Instructions
- Parts and Hardware Identification

10 Cubic Foot

Wheelbarrow

CAUTION:

Read, understand and follow ALL instructions before using this product

Tricam International
7677 Equitable Drive
Eden Prairie, MN 55344
800-304-1316

IMPORTANT SAFETY INSTRUCTIONS

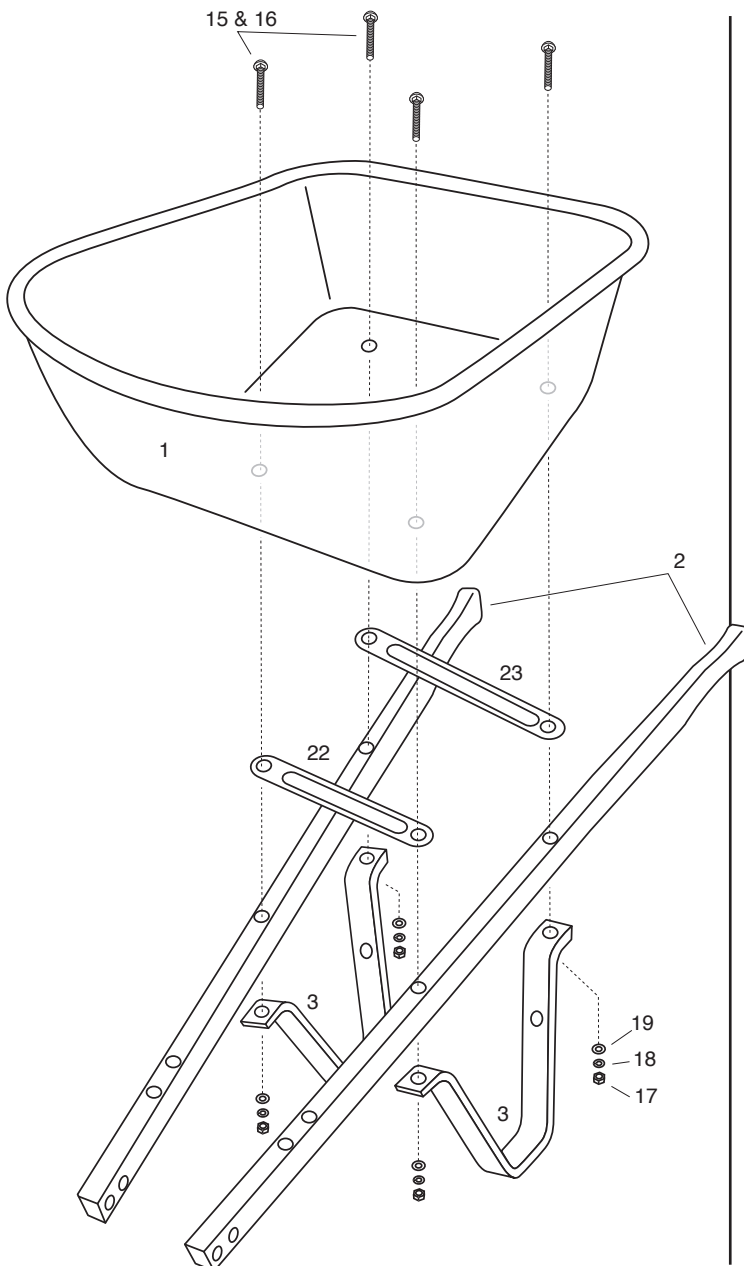
1. Read and understand all warning and instructions prior to using the wheelbarrow.
2. Always inspect the wheelbarrow for damage or excess wear prior to each use.
3. Never transport people using this wheelbarrow.

ASSEMBLY INSTRUCTIONS

Your Wheelbarrow requires assembly. Account for all parts and hardware before beginning assembly. If any parts are missing, damaged or if you have questions or need additional instructions, **DO NOT RETURN THIS PRODUCT TO THE RETAILER**, call the manufacturer at 1-800-304-1316.

Refer to the parts list on the following pages during assembly.

Do not tighten nuts until you have completed assembly of all parts!



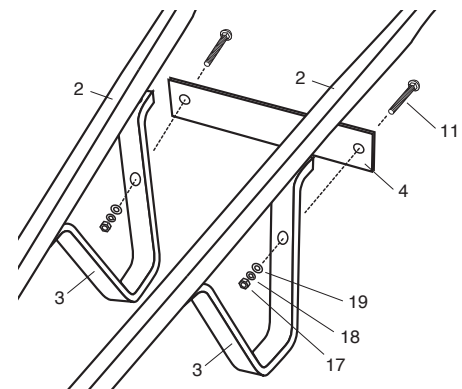
STEP 1 Place both handles on sawhorses or similar stand to firmly support the wheelbarrow during assembly.

STEP 2 Align the long and short cross braces over the handle machine screw holes.

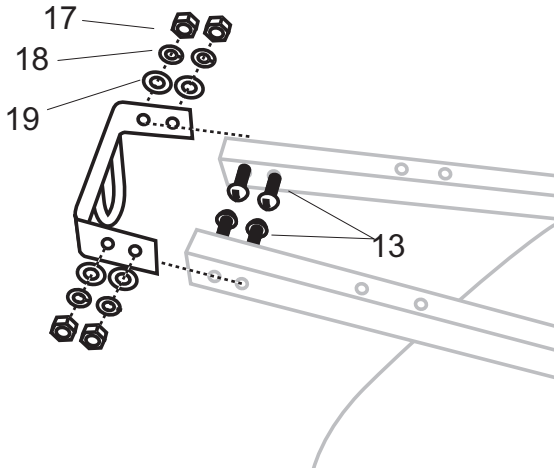
STEP 3 Insert M8x85mm machine screws thru each hole in the bottom of the tray. Position the tray machine screws so the screws align to go thru the long and short braces and the handles.

STEP 4 Attach the right and left legs onto each set of machine screws using washers, lock washers and nuts. Finger-tighten only.

STEP 5 Install leg brace with M8x20mm machine screw, flat washer, lock washer and nut at each end of the brace.

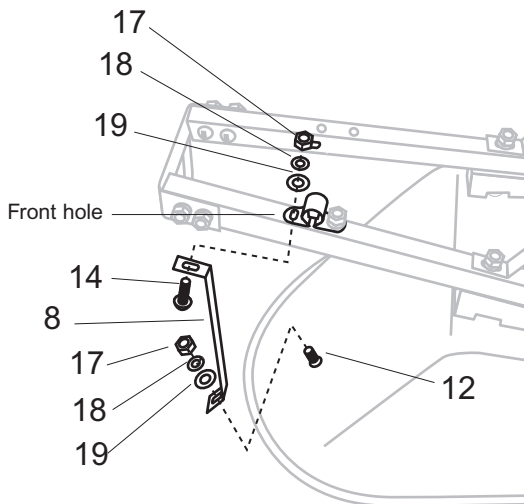


STEP 6 Install nose guard with M8x50mm machine screws. Using only the front screw holes in the handles first, install the screws thru the nose guard into the handles. Place washer, lock washer and nut on each bolt and only finger-tighten.

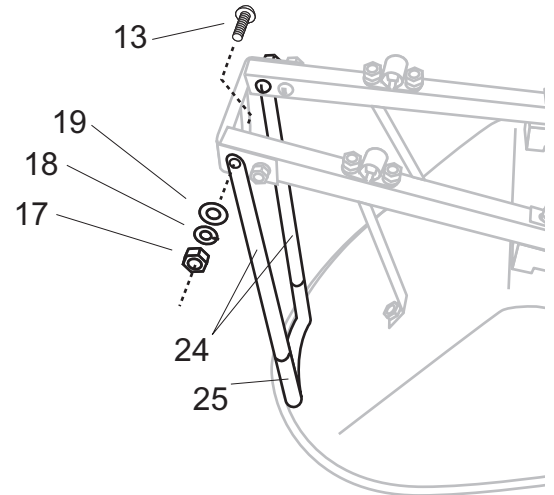


STEP 7 Install tray braces to front holes in tray with M8x20mm machine screws, washer, lock washer and nut. Finger-tighten only.

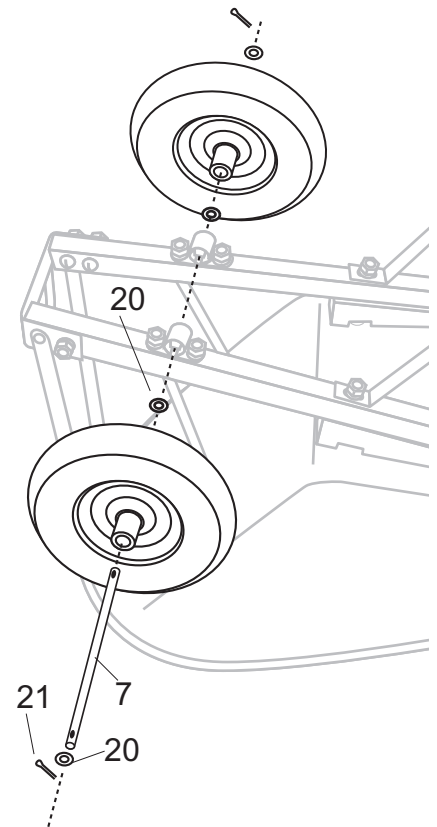
STEP 8 Insert four M8x80mm machine screws through the holes in the top front of the handles. Note: Two of the screws go through the bottom holes of the tray support braces first. Install both axle mounts. Finger-tighten assembly with washers, lock washers and nuts.



STEP 9 Pre-assemble tubular tray brace. Place U-shaped tray tube under the front lip of the tray. Align the bottom holes of the tubular braces with the front holes of the nose guard. Install screw, washer, lock washer and nut. Tighten all nose guard screws with wrench and screwdriver.



STEP 10 Slide axle through both axle mounts, centering axle to handles. Slide wheel washer over each end of the axle. Slide one wheel over each end of the axle. Slide one wheel washer over each end of the axle and secure with cotter pin.



STEP 11 Tighten all nuts securely with wrench.

PARTS & HARDWARE IDENTIFICATION

PARTS LIST

- 1 **Tray - (1)**
- 2 **Wood Handles - (2)**
- 3 **Legs - (2)**
- 4 **Leg Brace - (1)**
- 5 **Notched Wood Spacers - (2)**
- 6 **Axle Mounts - (2)**
- 7 **Axle - (1)**
- 8 **Tray Braces - (2)**
- 9 **Nose Guard - (1)**
- 10 **Tires - (2)**
- 11 **M8x20mm Slotted Bolts - (2)**
for leg brace
- 12 **M8x20mm Carriage Bolts - (2)**
for tray braces
- 13 **M8x50mm Carriage Bolts - (4)**
for nose guard
- 14 **M8x80mm Carriage Bolts - (4)**
for axle mounts
- 15 **M8x85mm Carriage Bolts - (2)**
for rear of tray
- 16 **M8x85mm Carriage Bolts - (2)**
for middle of tray
- 17 **Hex Nuts - (16)**
- 18 **Lock Washers - (16)**
- 19 **Flat Washers - (16)**
- 20 **Wheel Washers - (4)**
- 21 **Cotter Pins - (2)**
- 22 **Cross Brace (short) - (1)**
- 23 **Cross Brace (long) - (1)**
- 24 **Tray Support Tubes - (2)**
- 25 **Tray Tube - (1)**