



# OWNER'S MANUAL

Model MH1100-01



- **Warning: Not for recreational use - persons should never ride in cart**
- **Warning: Do not tow cart in excess of 15 mph - never tow behind car or truck**
- **Warning: Not for high speed or highway use**

## ***Monster Wagon***

### **CAUTION:**

Read, understand and follow ALL instructions before using this product

**RMM Corporation**  
**7677 Equitable Drive**  
**Minneapolis, MN 55344**  
**800-304-1316**  
**[www.black-cat-products.com](http://www.black-cat-products.com)**

# IMPORTANT SAFETY INSTRUCTIONS

1. **READ ALL INSTRUCTIONS CAREFULLY BEFORE USE.** If you do not understand these instructions, need clarification or further explanation, please call our toll free answer line for assistance at **1-800-304-1316** Monday through Friday 8:00 a.m. until 5:00 p.m. CST.
2. Do not load wagon with more than 2000 lbs. (908 kg)
3. Do not allow children to use the wagon unsupervised. This wagon is not a toy.
4. Always distribute payload evenly over surface of bed.
5. Do not load any items on top of the panels, remove panels when oversized objects are to be loaded onto the wagon.
6. If any parts become damaged, broken or misplaced, do not use the wagon until replacement parts can be obtained.
7. Do not operate or use on objects that can cause damage to the pneumatic tires or tubes.  
**Do not inflate tires more than 35 psi.**
8. **SAVE THESE INSTRUCTIONS.**

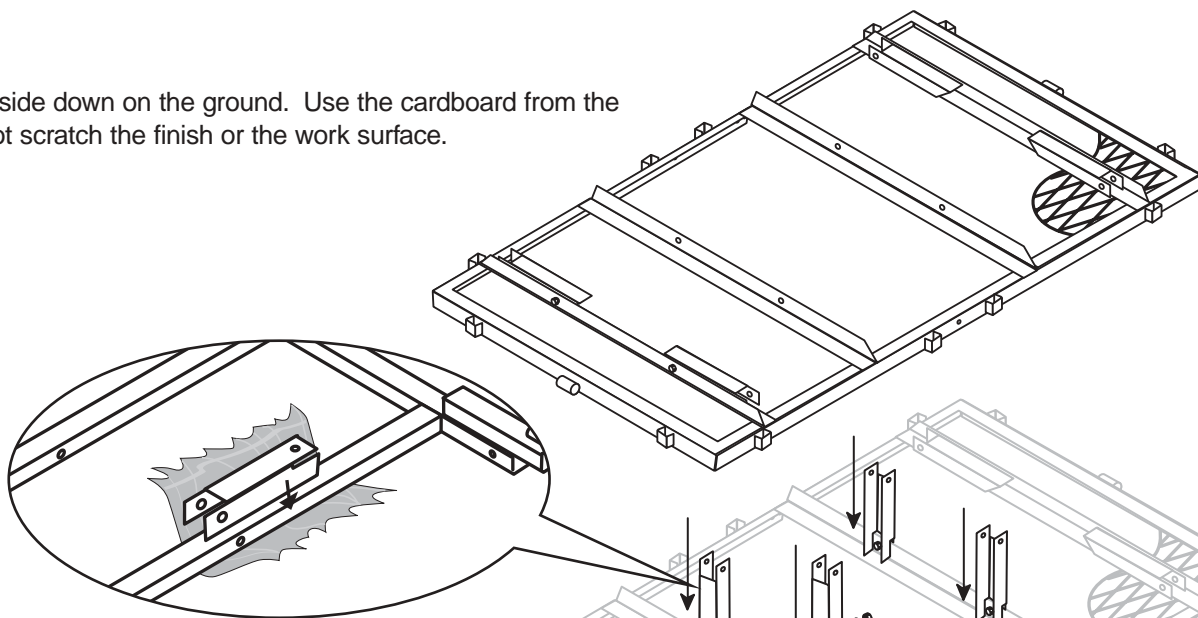
## ASSEMBLY INSTRUCTIONS

Your Monster Wagon requires assembly. Account for all parts and hardware before beginning assembly. If any parts are missing, damaged or if you have questions or need additional instructions, **DO NOT RETURN THIS PRODUCT TO THE RETAILER**, call the manufacturer at **1-800-304-1316**.

**Tools required for assembly: Metric Socket Set, Wrenches and pliers.**

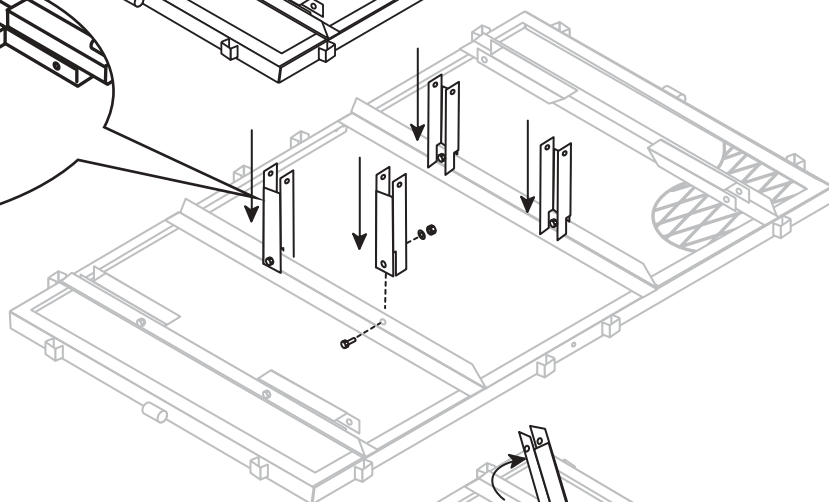
### STEP 1

Lay the Base upside down on the ground. Use the cardboard from the carton to help not scratch the finish or the work surface.



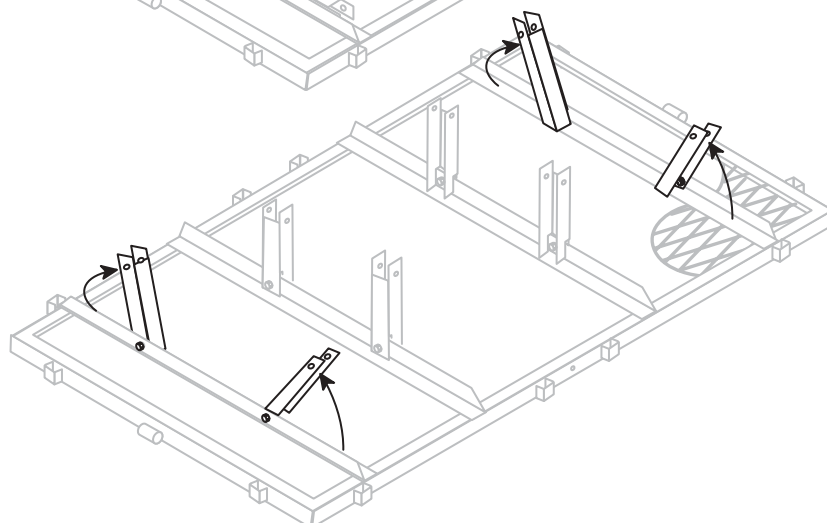
### STEP 2

For this step, you will need to remove the (4) Straight Support Brackets that are shipped attached to the Lower Frame Assembly. Once removed from the Lower Frame Assembly, attach the Straight Support Brackets to the Bed using (4) 10 x 35mm bolts, 10 mm washers, and 10 mm lock nuts (finger-tighten only at this time).



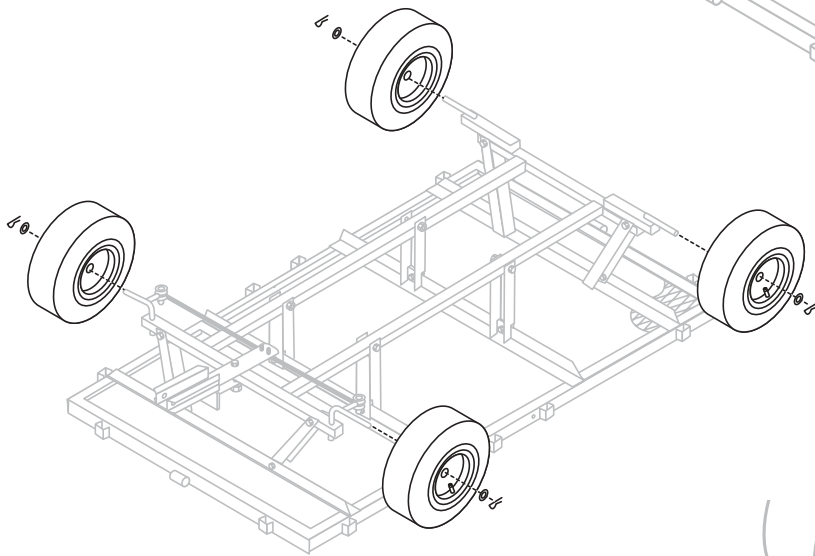
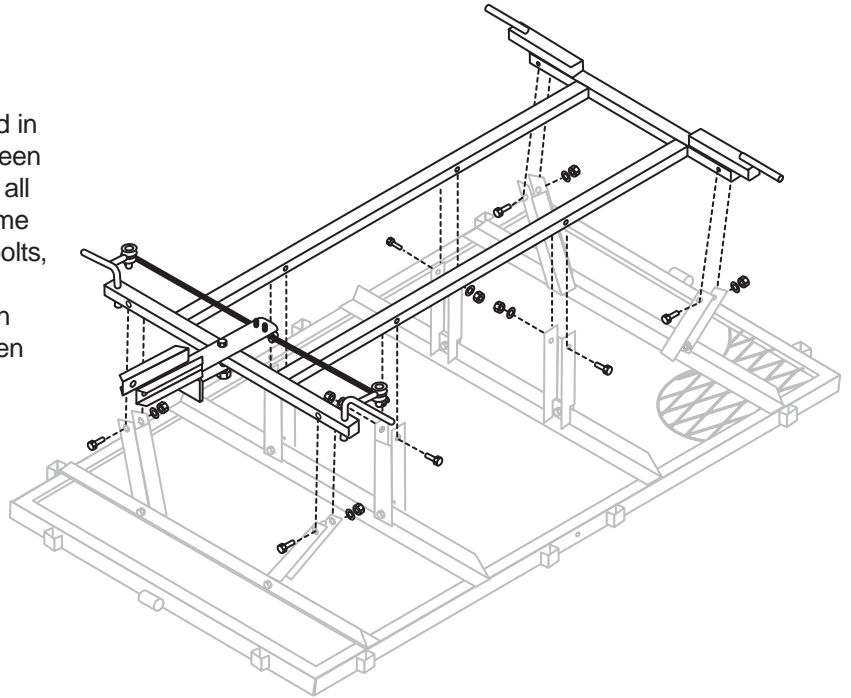
### STEP 3

The (4) Angled Support Brackets have been bolted to the Base for shipping. Pivot the Brackets up so that they are at a 75 degree angle pointing towards the outside edge of the Base, and tighten the lock nuts (do not over-tighten the lock nuts in this step – you will want the Angled Bracket to be able to move back and forth slightly for the next step).



## STEP 4

Lay the Lower Frame Assembly on top of the Straight and Angled Support Brackets positioned in the previous 2 steps. Align all of the holes between the Lower Frame Assembly and the Bed. Once all of the holes are aligned, connect the Lower Frame Assembly to the Bed using the (8) 10 x 60mm bolts, 10 mm washers, and 10 mm lock nuts (finger tighten only). Once all of the hardware has been installed and finger-tightened, go back and tighten all bolts, washers, and lock nuts from Steps 2-4.

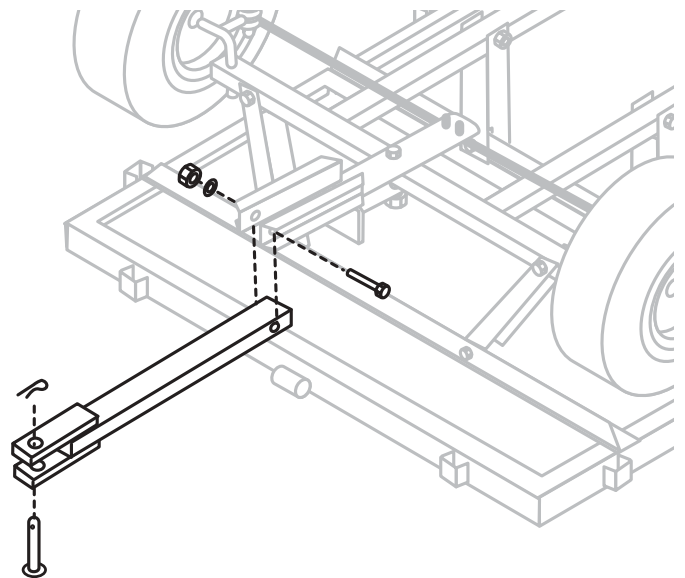


## STEP 5

Install the (4) Wheels onto each Axle of the Lower Frame Assembly. Place the (4) 20 mm washers onto the Axles on the outside of each Wheel, and insert the (4) large cotter pins through the holes at the end of each Axle. Be sure to bend one side of the cotter pin to keep it from falling back through the hole in the Axle.

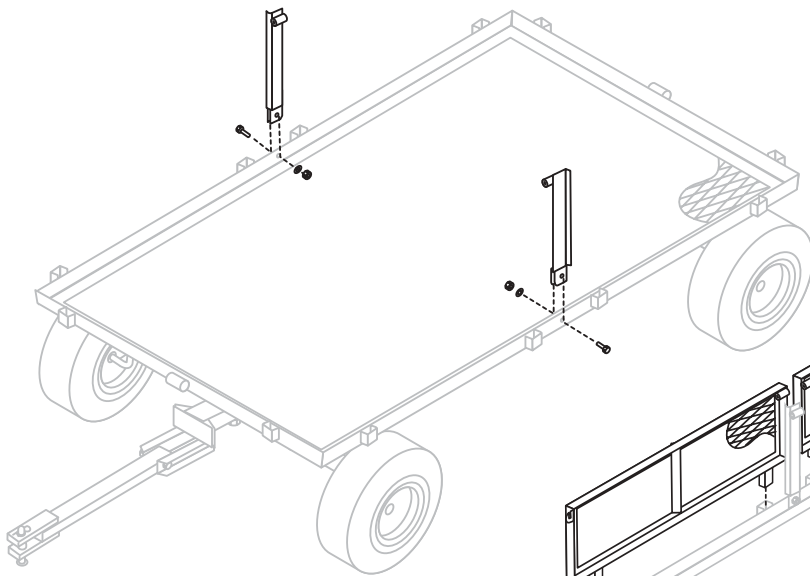
## STEP 6

Install the Trailer Hitch into the front part of the Lower Frame Assembly using a 12 x 60 mm bolt, 12 mm washer, and 12 mm lock nut. The bolt should be tight, but the Trailer Hitch should be able to move up and down freely.



## STEP 7

Turn the unit upright onto its Wheels for the remaining steps. Use two people to perform this step, being careful not to lose control of the wagon while turning it over. The best way to do this is to flip it over from side to side,



### STEP 8

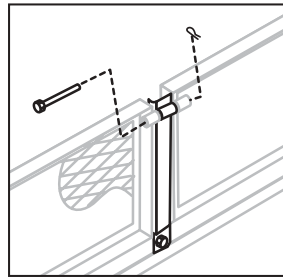
Attach the (2) Side Panel Brackets to the Base using (2) 8 x 20mm bolts, 8 mm washers, and 8 mm lock nuts. The circular tube at the top of the Bracket should face the inside of the wagon.

### STEP 9

Assemble the four Side Panels by inserting the stakes on the Panels into the brackets on the Base. When installing the Panels to the Base, make sure that the stakes for attaching the Panels to the Base are to the outside of the wagon. Also, make sure that the notches for the locking mechanisms are located in the corners of the wagon.

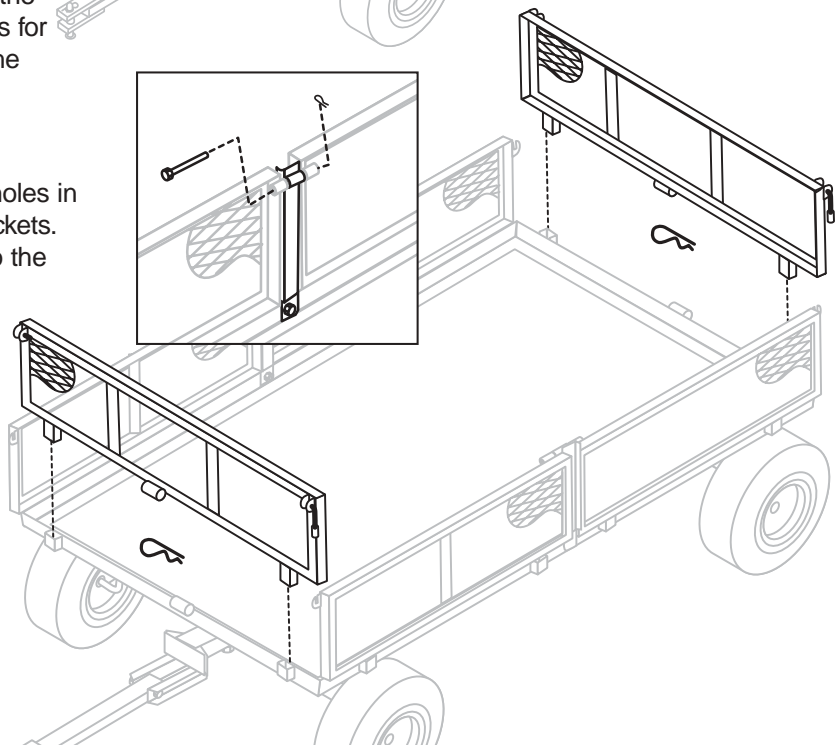
### STEP 10

Insert the (2) 100 mm pins through the holes in the Side Panels and the Side Panel Brackets. Once fully inserted, attach the Clips onto the end of the Pins.



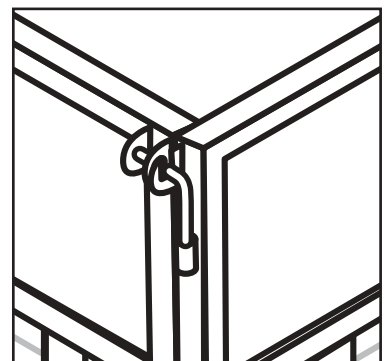
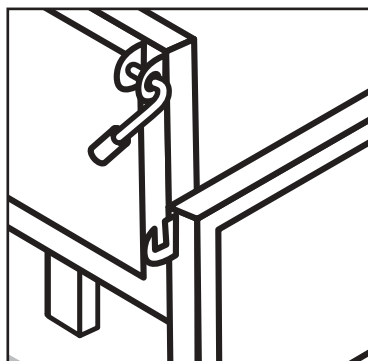
### STEP 11

Assemble the Front and Rear Panels by inserting the stakes on the Panels into the brackets on the Base and the (2) Fence Assembly Pins. Make sure that the stakes for attaching the Panels to the Base are to the outside of the wagon. Also, make sure that the Lock Handles in the corners are located to the outside of the wagon.



### STEP 12

Attach the Front and Rear Panels to the Side Panels by rotating the Lock Handles into place. Once all Panels are locked together in the upright position, tighten the 8mm lock nuts on the Lock Handles for smooth operation without being overly tight.

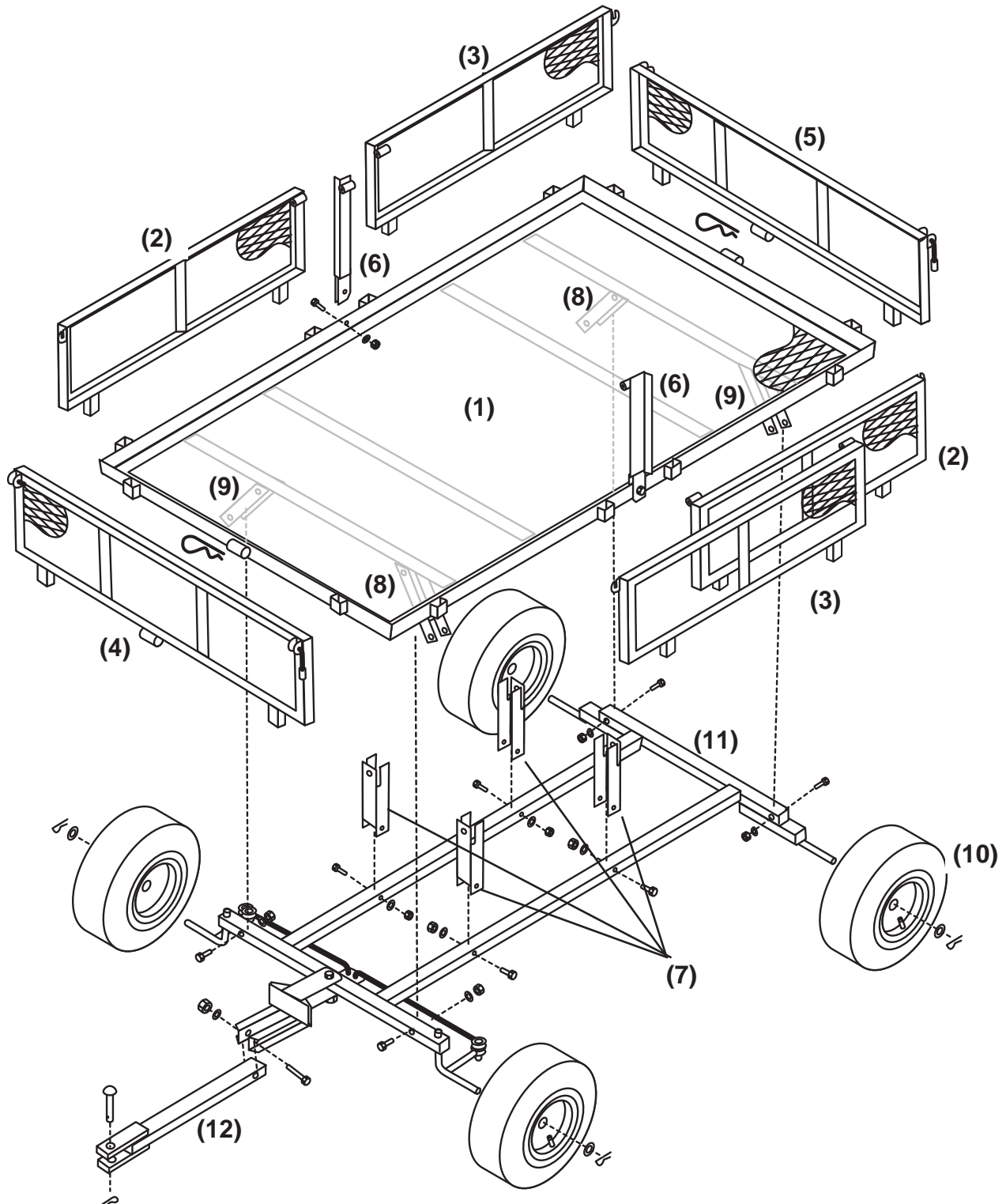




# EXPLODED DRAWING FOR ASSEMBLY

## MAIN FRAME PARTS

- |                               |   |
|-------------------------------|---|
| (1) Base – (1)                | (7) Straight Support Brackets(Center) – (4) |
| (2) Side Panels – (2)         | (8) Angled Support Brackets (Right) – (2)   |
| (3) Side Panels – (2)         | (9) Angled Support Brackets (Left) – (2)    |
| (4) Front Panel – (1)         | (10) 16" Wheels – (4)                       |
| (5) Rear Panel – (1)          | (11) Lower Frame Assembly – (1)             |
| (6) Side Panel Brackets – (2) | (12) Trailer Hitch – (1)                    |



# PARTS AND HARDWARE IDENTIFICATION

---

## ASSEMBLY HARDWARE



(13) **Bolts 10 x 20mm** – (4) pre-assembled to angled support brackets



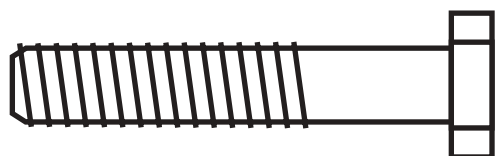
(14) **Bolts 10 x 35mm** – (4) for straight support brackets



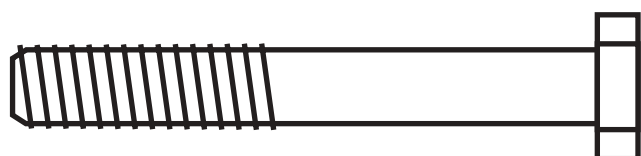
(15) **Bolts 10 x 60mm** – (8) for straight and angled support brackets



(16) **Bolts 8 x 20mm** – (2) for side panel brackets



(17) **Bolts 12 x 60mm** – (1) for installing pull handle



(18) **Bolts 12 x 80mm** – (1) pre-assembled to lower frame assembly



(19) **Lock Nuts 10mm** – (16) 4 are pre-assembled to angled support brackets



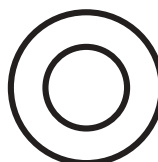
(20) **Lock Nuts 8mm** – (6) 4 are pre-assembled lock handles, 2 for side panel brackets



(21) **Lock Nuts 12mm** – (2) 1 for installing tractor pull handle. 1 is pre-assembled to lower frame assembly



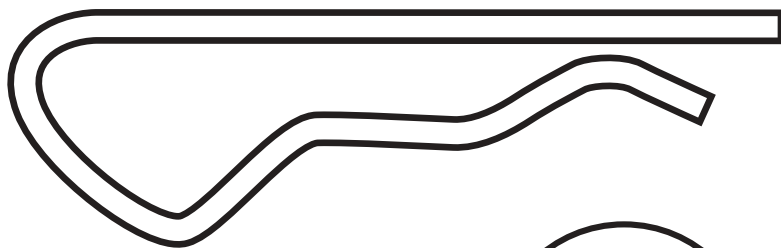
(22) **Washers 8mm** – (6) 2 for side panel brackets, 4 are pre-assembled to lock handles



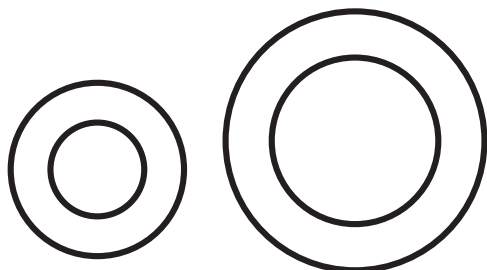
(23) **Washers 10mm** – (18) 6 are pre-assembled to angled support brackets and lower frame assembly

# PARTS AND HARDWARE IDENTIFICATION

---



(24) **Fence Assembly Pins** – (2) Used on the front and rear fence assembly



(25) **Washers 12mm** – (2) 1 for installing pull handle, 1 is pre-assembled to lower frame assembly

(26) **Washers 20mm** – (6) 4 used on wheels, 2 pre-assembled to lower frame assembly



(27) **Pins 100mm** – (2) for attaching side panels to side panel brackets



(28) **Clips** – (2) for use with 100mm pins



(29) **Small Cotter Pins** – (2) pre-assembled on lower frame assembly



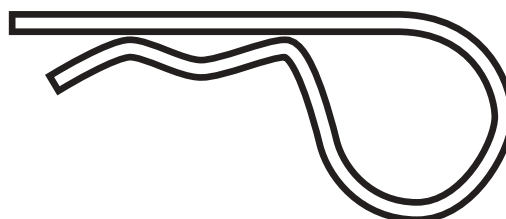
(30) **Large Cotter Pins** – (6) 4 for retaining wheels, 2 are pre-assembled to lower frame assembly



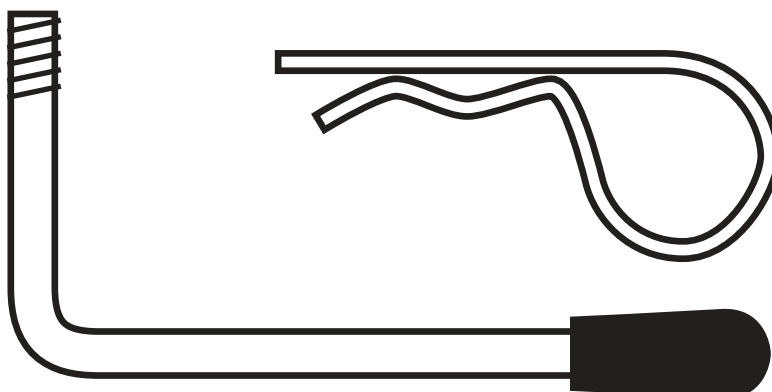
(31) **Small Clevis Pins** – (2) pre-assembled on lower frame assembly



(32) **Large Clevis Pin** – (1) pre-assembled on Trailer Hitch



(33) **Clevis Clip** – (1) pre-assembled on Trailer Htich



(34) **Lock Handles 8mm** – (4) pre-assembled on front and rear panels