



# OWNER'S MANUAL

Model MH1930



- Important Safety Instructions
- Assembly Instructions
- Parts and Hardware Identification

## Extreme Hydraulic Lift Cart

### **CAUTION:**

Read, understand and follow ALL instructions before using this product

**Tricam International**  
**7677 Equitable Drive**  
**Minneapolis, MN 55344**  
**[www.black-cat-products.com](http://www.black-cat-products.com)**  
**800-304-1316**

REV 4/21/04

# IMPORTANT SAFETY INSTRUCTIONS

**Read and understand all warning and instructions prior to using the hydraulic lift cart.**

1. Always inspect the cart for damage or excess wear prior to each use.
2. Always use on an flat, level surface.
3. Never lift or transport people using this hydraulic lift cart.
4. Do not exceed maximum load capacity of 3000 lbs.
5. Do not use the hydraulic lift cart for purposes other than its intended use.
6. Use hydraulic lift cart under dry conditions only.

## ASSEMBLY INSTRUCTIONS

Your hydraulic lift cart requires assembly. Account for all parts and hardware before beginning assembly. If any parts are missing, damaged or if you have questions or need additional instructions **DO NOT RETURN THIS PRODUCT TO THE RETAILER**, call the manufacturer at **1-800-304-1316**.

**Refer to the exploded drawing and the parts list on the following pages during assembly.**

### 1. INSTALLATION OF AIR SCREW

To prevent oil from leaking during shipping, the Air Screw (Part # 158) is replaced with an oil-sealing screw at the factory. It must be installed when you put the unit into use.

To Replace: Unscrew the oil-sealing screw, then insert the Air Screw provided in the parts bag.

### 2. HANDLE

The handle is shipped disassembled from the unit and packed separately. It must be assembled and adjusted properly before use.

#### A. Installation of Handle:

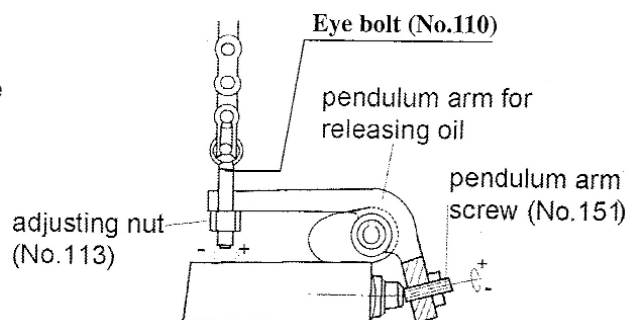
- Take (3) M10 Nuts (Part # 186) and Hex Wrench from the parts bag.
- Assemble the handle on the Handle Base (Part # 181) with (3) M10 Nuts and Spring Washers.
- Place the chain's Eye Bolt (Part # 110) into the slot at the front end of the Pendulum Arm (Part # 112).

#### B. Handle Adjustment:

- There are 3 different positions for the Release Lever (Part #106). Each position has a different function:

**Position I:** Quick Lifting      **Position II:** Slow Lifting      **Position III:** Descending

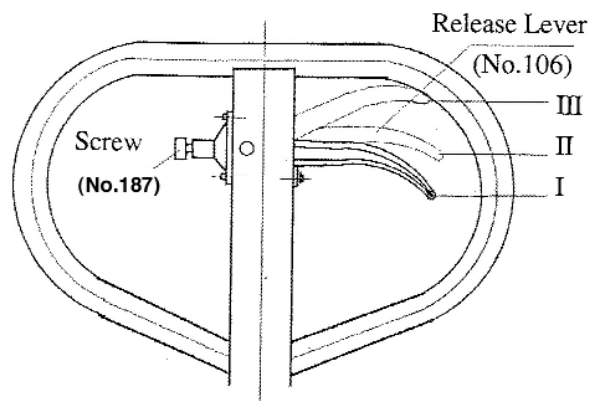
- Test the different Release Lever functions by putting the Release Lever in the 3 different positions respectively. If one of the positions does not function properly, then adjust the Lock Nut (Part #113) or Pendulum Arm (Part #151) by following the procedures listed below:



PROBLEM	ADJUSTMENT OF LOCK NUT	ADJUSTMENT OF PENDULUM ARM SCREW
1. Cart Not Lifting	Turn Counter-Clockwise	Turn Counter Clockwise
2. Cart Not Lowering	Turn Clockwise	Turn Clockwise
3. Slow Lifting Not Working	Turn Clockwise	Turn Clockwise
4. Quick Lifting Not Working	Turn Counter-Clockwise	Turn Counter Clockwise

### C. Setting the Adjusting Screw on the Release Lever

- To adjust the Release Lever (Part #106) into the (3) positions properly, you can adjust the Screw (Part #187) to alter the force of the Release Lever.
- To prevent accidental touching of the Release Lever, you can tighten the screw (Part #187).

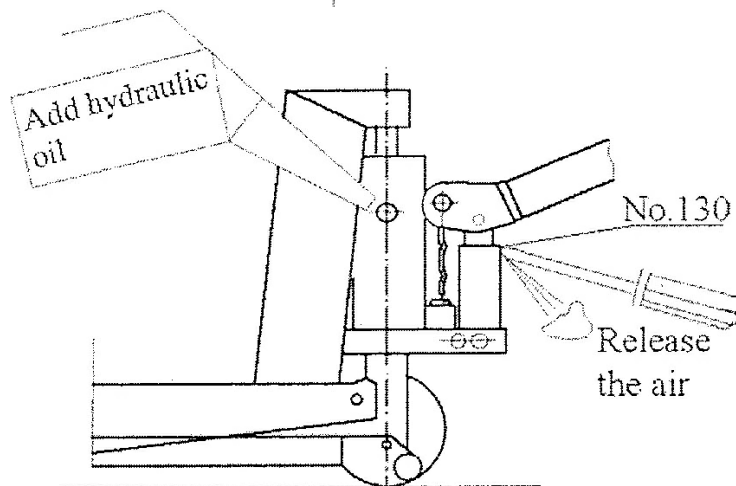


### 3. HOW TO RELEASE AIR FROM THE PUMP

Loosen the Screw (Part #130) on the pump while pushing the handle down slowly to release the excess air from the pump. Retighten the screw once the air has been removed.

### 4. ADDING OIL

If the Hydraulic Lift Cart can not be pumped up to its highest position, you may need to add hydraulic oil to the oil tank. The hydraulic fluid to be used must meet ISO VG22 or equivalent. Mixing of different fluids is prohibited.



## WARNING

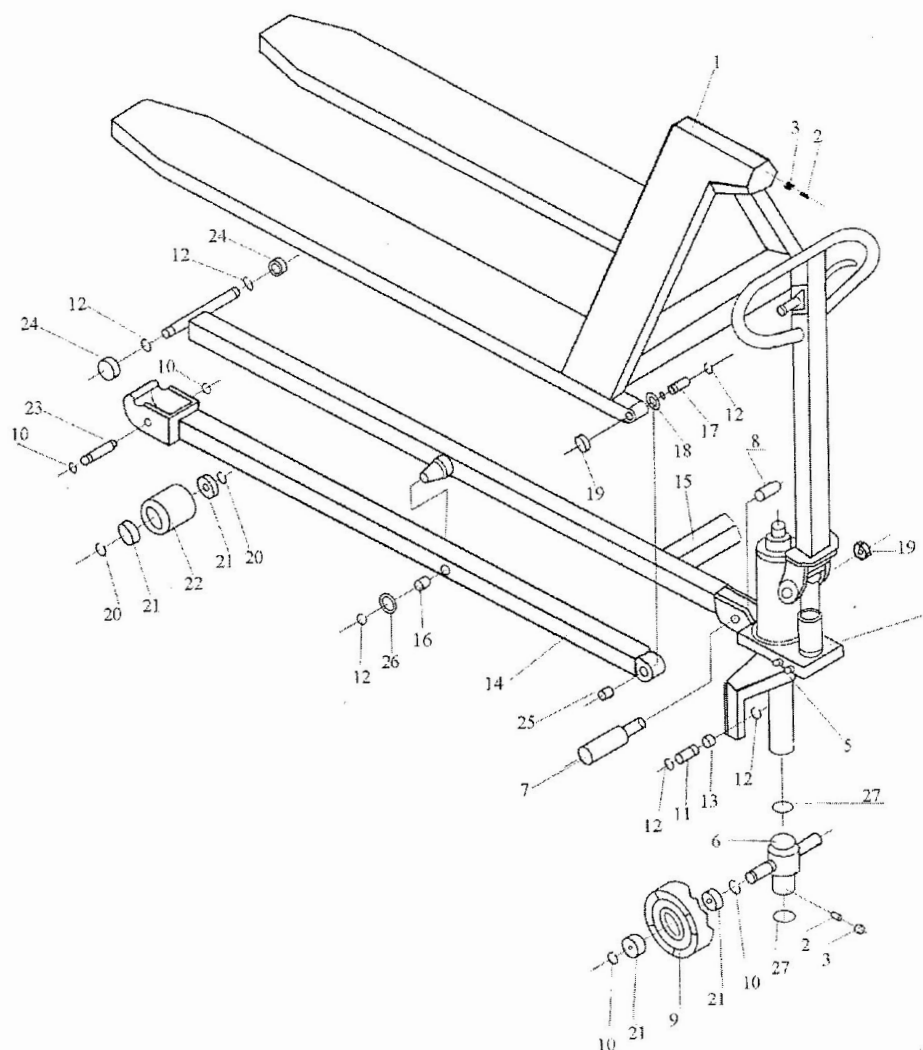
**Read and understand all warnings and instructions prior to use.**

- Inspect the unit prior to each use.
- Do not use if damaged or worn excessively. Keep hands and feet away from lift mechanism.
- Do not move the unit when it is in the raised position.
- Always use on a flat, level surface.
- Never lift or transport people.
- Make sure load is safe and secure prior to lifting or moving the unit.
- Do not modify the hydraulic lift cart.

## TROUBLESHOOTING

TROUBLE	POSSIBLE CAUSE	RECOMMENDED ACTION
Lift Cart Will Not Raise Up	1. Low oil level in tank 2. Air present in the hydraulic system  3. Pendulum Arm Nut is not properly adjusted	1. Add hydraulic oil 2. Pump the handle quickly several times to bleed air from the system 3. Adjust Pendulum Arm Screw
Lift Cart Will Not Lower	1. The fork is blocked 3. Pendulum Arm Nut is not properly adjusted	1. Check and remove obstruction 3. Adjust Pendulum Arm Nut
Lift Cart Will Not Raise Up To The Highest Level	1. Not enough oil in the tank	1. Add hydraulic oil
There Is No Difference In Speed Between Release Lever Position I and II	1. Pendulum Arm Nut is not adjusted properly	1. Adjust Pendulum Arm Nut

# PARTS AND HARDWARE IDENTIFICATION



Parts List

No.	Description	Qt'y	No.	Description	Qt'y
1	Fork	1	15	Leg	1
2	Screw	2	16	Bush	2
3	Nut	2	17	Pin	2
4	Power unit	1	18	Washer	2
5	Hold yoke	1	19	Nut & spring washer	4
6	Wheel yoke	1	20	Washer	8
7	Centrifugal axle	2	21	Ball bearing	8
8	Spacer	2	22	Front wheel	2
9	Steering wheel	2	23	Wheel axle	2
10	Snap ring	6	24	Roller	4
11	Pin	2	25	Bush	2
12	Snap ring	12	26	Washer	2
13	Bush	2	27	O-ring	2
14	Leg	2			

# PARTS AND HARDWARE IDENTIFICATION

## Parts list

Part No.	DESCRIPTION	QTY	Part No.	DESCRIPTION	QTY
101	Locknut	1	151	Pendulum arm screw	1
102	Handle	1	152	Lock nut	1
103	Screw	1	153	O-ring	1
104	Pin	1	154	Cylinder head	1
105	Roller	1	155	O-ring	1
106	Release Lever	1	156	Lifting ram	1
107	Release rod	1	157	Screw	2
108	Chain connector	3	158*	Air screw	1
109	Chain	1	159	Cylinder	1
110	Eye bolt	1	160	Pump housing	1
111*	Washer	1	161	Thrust bearing	1
112	Pendulum arm	1	162	Ball	1
113	Pendulum arm nut	1	163	Snap ring	1
114	Positioner	1	164	Washer	1
115	Screw	5	165	Bush	1
116	Washer	2	166	Piston rod	1
117	Pin	1	167	O-ring	1
118	Valve insert	1	168	O-ring	1
119	Seat	1	169	Y-ring	1
120	Screw	2	170	Bush	2
121	Gasket	2	171	Piston	1
122	Spring	2	172	Screw	1
123	Release valve	2	173	Axle	1
124	Ball	2	174	Gasket	1
125	Valve insert	1	175	Lock screw	1
126	O-ring	8	176	Rubber sleeve	1
127	Spring	1	177	Washer	1
128*	O-ring	1	178	Washer	5
129	Release indicator	1	179	Bush	1
130*	Screw	1	180	Adjusting screw	1
131	Pump piston	1	181	Handle base	1
132	Guide ring	1	182	Adjusting washer	1
133	Y-ring	1	183	Hex screw	3
134	Washer	1	184	Spring guide	1
135	Snap ring	1	185	Rubber sleeve	1
136	Scraper ring	2	186	Spring washer	3
137	O-ring	3	187	lock screw for release lever	1
138	Y-ring	2	188	Spring socket	1
139	Pump cylinder	1	189	Spacer	2
140	O-ring	1	190	Copper piston	1
141	Spring	1	191	Snap ring	1
142	Hi-pressure piston	1	192	Snap ring	1
143	O-ring	1	193	Spring	1
144	Ball	1	194	Pin	1
145	Spring	1	195	Ball	1
146	Adjusting screw	1	Remark: Parts with "*" mark are supplied together with the High Lifter and packed in the poly bags.		
147	Sealing screw	1			
148	Screw	1			
149	Snap ring	2			
150	O-ring	2			



# PARTS AND HARDWARE IDENTIFICATION

