

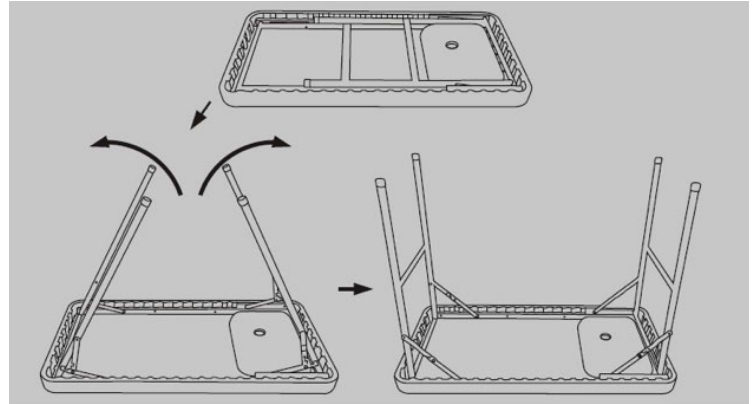
# FILLET TABLE

## ASSEMBLY & SET-UP INSTRUCTIONS

### Step 1:

Remove table from the box and position it on the ground as illustrated below. Open up each leg set and lock into place.

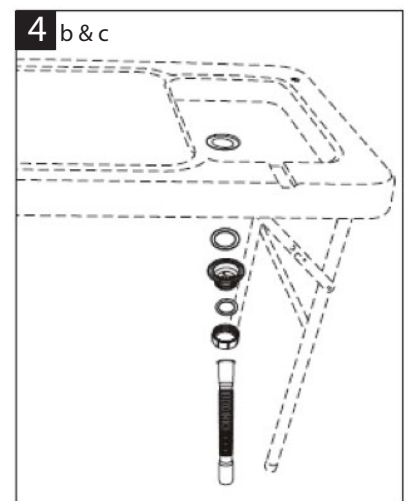
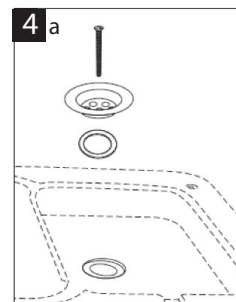
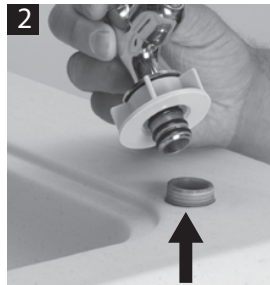
(MAKE SURE LEGS ARE COMPLETELY LOCKED IN POSITION BEFORE USING!)



### Step 2:

#### Faucet and Drain Assembly.

- 1) Connect the quick connector to the a standard water hose (shown in diagram 1).
- 2) Slide the quick connector end thru the bottom side of the table (shown in diagram 2).
- CAUTION: The gray quick connector comes up from the bottom of the table not the top.**
- 3) Insert faucet with retaining nut, c-clip and O-Rings pre-installed into quick connector and tighten.
- 4) Drain Connection:
  - a. Place the rubber washer and the metal drain on top of the drain hole. Slide the bolt thru both.
  - b. Next, place the rubber washer on top of the white drain connector and attach to the bolt and tighten.
  - c. Finally, slide the accordion drain pipe thru the white washer connector and tighten both to the white drain connector at the bottom of the table.



### Step 3:

#### To Store Table

- 1) Remove faucet.
- 2) Unlock legs and fold.

Tricam  
 7677 Equitable Drive  
 Eden Prairie, MN 55344  
 1-800-867-6763  
[www.tricam.com](http://www.tricam.com)

**WARNINGS:** DO NOT DRINK WATER FROM FAUCET. DO NOT SIT OR STAND ON TABLE. DO NOT EXCEED THE OVERALL LOAD CAPACITY OF 150 LBS. DO NOT ALLOW CHILDREN TO USE THIS TABLE WITHOUT SUPERVISION. AVOID ALL PINCH POINTS.